

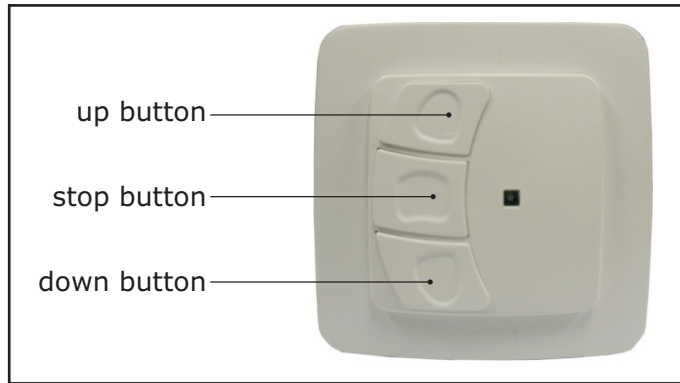
Installation Guide (For AVA-341-RF 1Channel)

AVA-341-RF



All controls support 230V/50Hz & 120V/60Hz

AVA-341-RF 1 Channel (Wall-Mounted)



Description	AVA-341-RF
Input Voltage	12V
Emission Frequency	433.92MHz ± 100KHz
Emission Power	10milliwatt
Work Temperature	-10C - 50C
Emission Distance	Open 200m, two walls 30m

Notice: transmitter Do not exposed to moisture and strike, so as not to affect life. When you use transmitter, if found emission distance obviously short or less sensitive, please change another same new battery. Please have batteries for recycling.

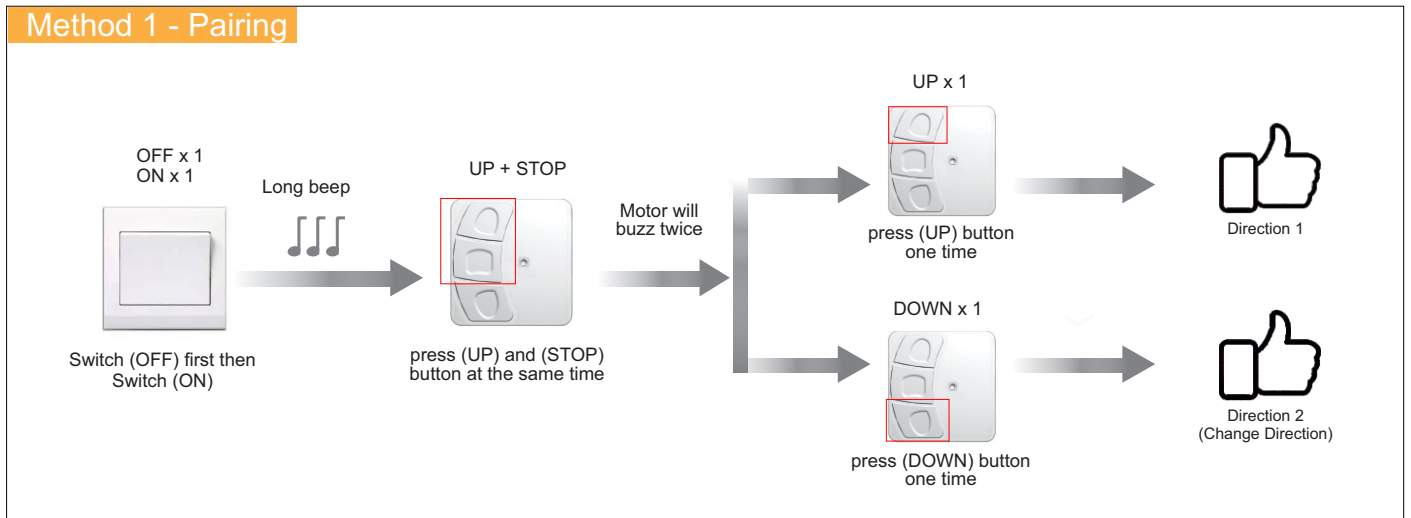
- Components button (P2) (up button+stop button) is setting button, it's valid that press two button at the same time.
- Transmitter() UP BUTTON
- Transmitter() STOP BUTTON
- Transmitter() DOWN BUTTON

SETTINGS

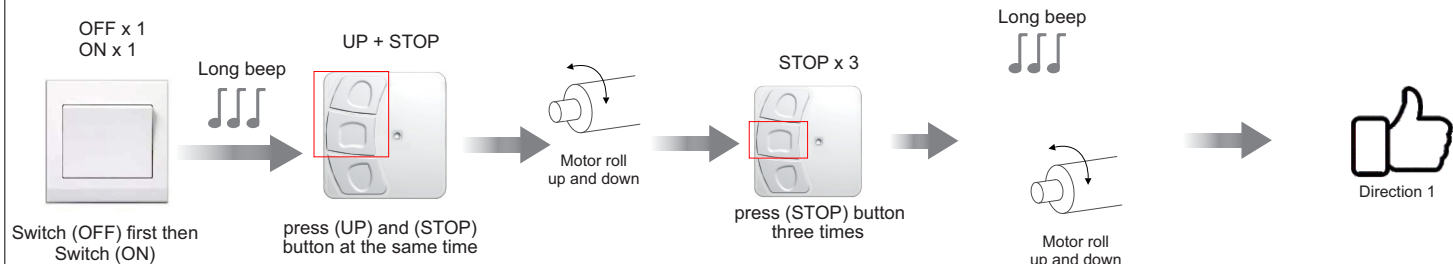
Pairing Radio-Frequency Remote with RF Motor (Wall-Mounted)

! The interval of re-switch ON/OFF must be over 10 seconds.

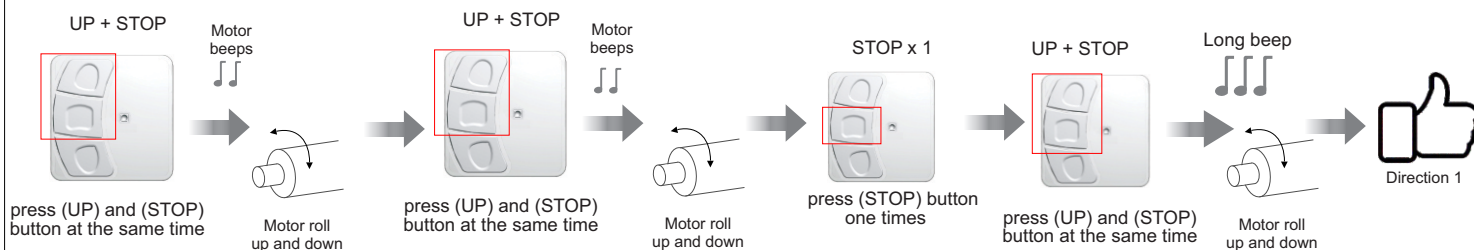
Method 1 - Pairing



Method 2 - Pairing (Alternative)



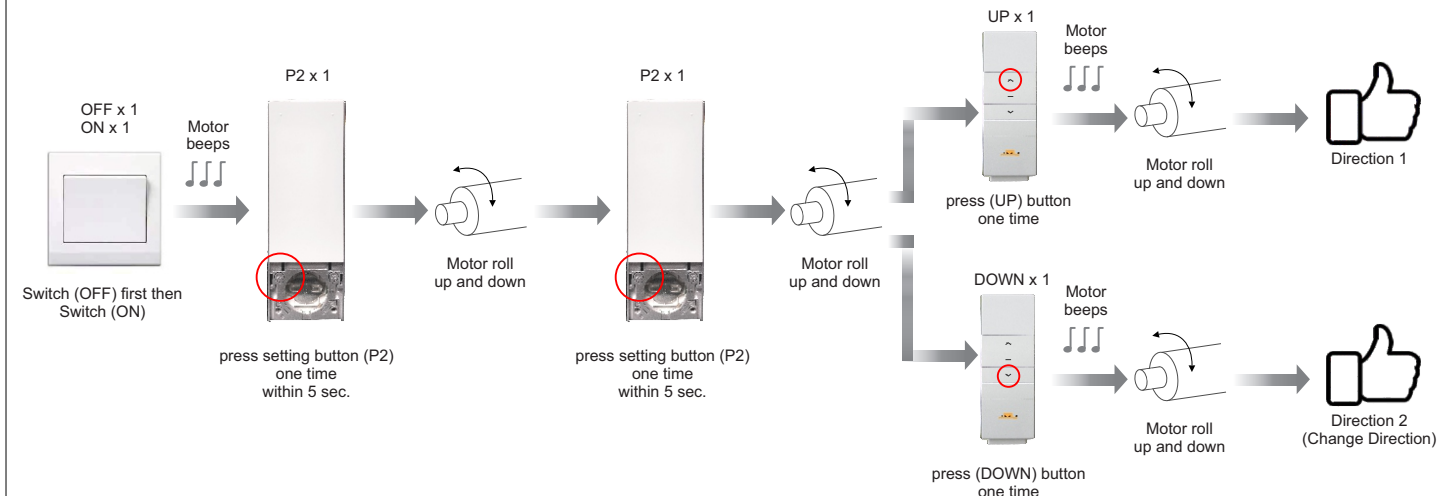
Delete Memory of RF Motor/Remote Pairing



APPENDIX SETTINGS

**AVA-315 RF Remote is an optional item.
For this case it is used to set motor direction**

Change Direction of Motor



End